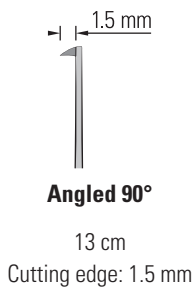


Von Graefe Knife

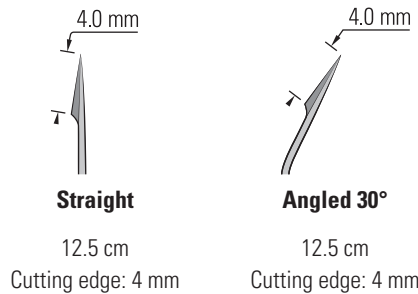
Used for cutting dura.



No. 10059-13

Cataract Knife

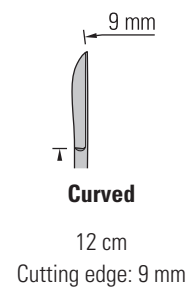
One of the most popular dissecting knives with a microfine point. The cutting edge is lance shaped to provide the ideal cutting angle.



No. 10055-12

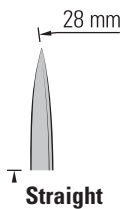
No. 10056-12

Sichel



No. 10073-14

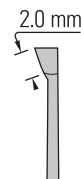
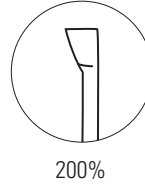
Micro Knife



13 cm
Cutting edge: 28 mm

No. 10370-13

Micro Knife Side Cut

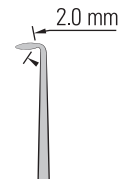
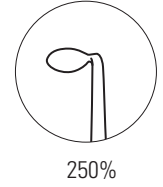


15 cm
Cutting edge: 2 mm

No. 10058-15

Circle Knife

Sharp cutting edge around tip.



16 cm
Cutting edge: 2 mm

No. 10059-15

Gross Anatomy Knives

Handles are made of fiberglass reinforced yellow nylon with a slip resistant surface that allows little chance of bacterial accumulation. The blades are made of German Molybdenum Stainless Steel.



Dissection knives

26 cm
Cutting edge: 13 cm

No. 10157-13

28 cm
Cutting edge: 15 cm

No. 10157-15

31 cm
Cutting edge: 18 cm

No. 10157-18



Brain sectioning knife

44 cm
Cutting edge: 30 cm

No. 10152-30

Obsidian Stone Age Scalpels

For applications where extremely fine cuts are required or for studies where trace metals from ordinary scalpel blades cannot be tolerated. These ultra fine cutting edges have been used in human surgical procedures where objectionable scar tissue results from the use of standard scalpels. The blade is made from obsidian—a type of volcanic glass—which allows a much finer blade than is possible with the conventional steel blade. In some cases this makes the relatively inexpensive obsidian scalpel a suitable substitute for an expensive diamond knife. Patterned after “stone age” knives which first made their appearance about 18,000 years ago, these modern versions utilize hard wood and plastic dowels for handles. Plastic dowels are made of polyoxymethylene.



Cautionary note: Obsidian is a very fragile material. Great care should be taken to not exert any lateral pressure on the blade during cutting. Each blade is hand-fashioned, so sizes, shapes and points will vary. While all the blades will have at least one sharp edge, some will have two.

<p>150%</p>	<p>150%</p>	<p>150%</p>	
<p>Wood Dowel Not autoclavable</p>	<p>Plastic Dowel Autoclavable</p>	<p>Plastic Dowel Autoclavable</p>	
<p>Straight 13 cm Cutting edge: 6 mm</p>	<p>Straight 13.5 cm Cutting edge: 12 mm</p>	<p>Straight 12.5 cm Cutting edge: 6 mm</p>	<p>Angled 12.5 cm Cutting edge: 6 mm</p>
<p>No. 10110-01</p>	<p>No. 10110-03</p>	<p>No. 10110-05</p>	<p>No. 10110-07</p>

CERAMIC & DIAMOND KNIVES

Ceramic Blades

Advantages:

- Ceramic edge stays sharp 100 times longer than steel edge
- Rust and corrosion free
- Chemical and acid resistant
- Withstands up to 2400 °C (4352 °F)
- No electrostatic discharge concerns
- No trace metal contamination
- Fully nonmagnetic



Aluminum Alloyed
Handle
12.5 cm

No. 10025-50



Angled 45°

33 x 6 x 0.5 mm
Cutting edge: 4.5 mm
Pkg. of 5 blades

No. 10025-44



Angled 45°

33 x 6 x 0.5 mm
Cutting edge: 2.5 mm
Pkg. of 5 blades

No. 10025-43



Angled 23°

33 x 6 x 0.5 mm
Cutting edge: 14 mm
Pkg. of 5 blades

No. 10025-23



Angled 45°

33 x 6 x 0.5 mm
Cutting edge: 8 mm
Pkg. of 5 blades

No. 10025-45

Diamond Knives

This knife has a gem-quality, neutral diamond blade which is honed to the finest cutting edge possible. The blade is made to an ophthalmic surgical standard and is inspected under 400x magnification. The retractable handle aids in care and storage.



Cautionary note: This blade is extremely fragile and vulnerable to lateral pressure.



Cutting angle: 30°

12 cm
Cutting edge: 1 mm
Tip thickness: 0.15 mm

No. 10100-30



Cutting angle: 45°

12 cm
Cutting edge: 1 mm
Tip thickness: 0.15 mm

No. 10100-45



Grip slides up the handle to protect the tip for safe storage and packing.

Blade Holders and Breakers

Breakable Carbon Steel Blades

These special, high carbon content blades are the only blades that will break cleanly.

Not autoclavable.

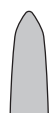
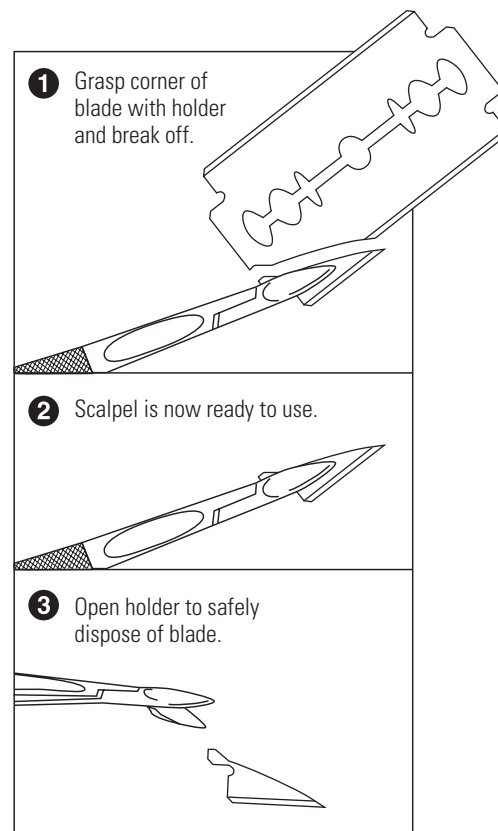


Blade thickness: 0.1 mm
Pkg. of 10 blades

No. 10050-00

Create Your Own Blade

With these blade holders/breakers and our special carbon steel blades, No. 10050-00, you can produce microblades in sizes that meet your own individual needs.



11 cm

Jaw width: 4 mm

Flat surface

No. 10052-11



9 cm

Jaw width: 4 mm

Concave / Convex surface
Handle diameter: 5.5 mm

No. 10053-09



13 cm

Jaw width: 4 mm

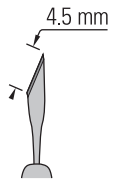
Concave / Convex surface
Handle diameter: 8 mm

No. 10053-13

SCALPELS

Carbon Steel Scalpel

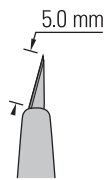
Cold forged from carbon steel and sharpened to eliminate tissue distortion and blade drag. 12.5 cm plastic handle with slip-proof grip. **Sterile.**



22.5° Cutting angle

13.5 cm
Cutting edge: 4.5 mm
Tip thickness: 0.15 mm

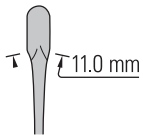
No. 10316-14



15° Cutting Angle

13 cm
Cutting edge: 5 mm
Tip thickness: 0.15 mm

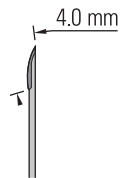
No. 10315-12



Crescent blade

14 cm
Cutting edge: 11 mm
Tip thickness: 0.2 mm

No. 10317-14



Needle blade

14.5 cm
Cutting edge: 4 mm
Tip thickness: 0.2 mm

No. 10318-14

Interchangeable Carbon Steel Blades



Angled Carbon steel

Cutting edge: 10 mm
Pkg. of 5 blades

No. 10035-15



Curved Carbon steel

Cutting edge: 10 mm
Pkg. of 5 blades

No. 10035-20



Small / Flat Carbon steel

Cutting edge: 1.5 mm
Pkg. of 5 blades

No. 10035-05



Large / flat Carbon steel

Cutting edge: 2.75 mm
Pkg. of 5 blades

No. 10035-10

Handle for Interchangeable Blades
9.5 cm

No. 10035-00

12.5 cm

No. 10035-12



Cane Carbon steel

Cutting edge: 12 mm
Pkg. of 5 blades

No. 10035-25



Arc Carbon steel

Cutting edge: 12 mm
Pkg. of 5 blades

No. 10035-30

Scalpel Handle #4 with Silicone

For heavy, gross anatomy work.
Molded to fit hand.



13.5 cm

No. 10009-13

Standard Scalpel Handle #4 Solid

Especially suitable for large dissections.



13 cm

No. 10004-13

Blades for #4 Scalpel Handle

The alloy used has a high carbon content which provides a longer lasting edge. Blades come individually wrapped. **Non-sterile.**



#20 blades

Box of 100 blades

No. 10020-00



#21 blades

Box of 100 blades

No. 10021-00



#22 blades

Box of 100 blades

No. 10022-00



#23 blades

Box of 100 blades

No. 10023-00

#3 Standard



12 cm

No. 10003-12

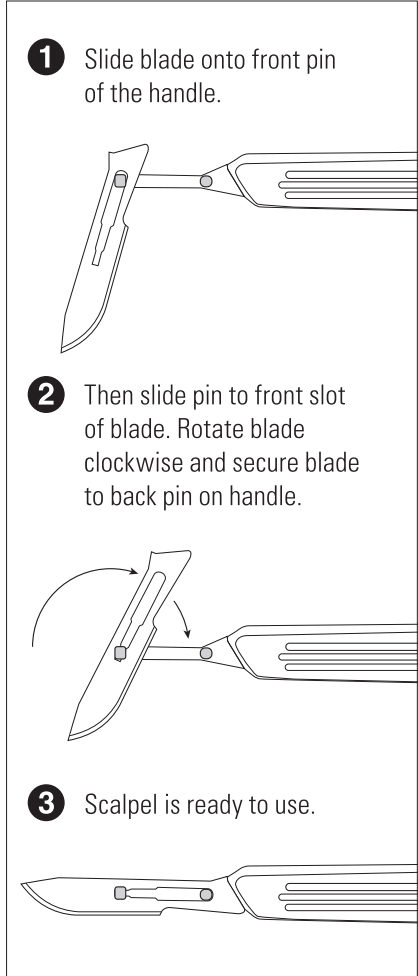
#3 Secure

A safety lock holds the blade securely, and allows simple and safe blade attachment and removal.



12 cm

No. 10003-13



Blades for #3 and #7 Scalpel Handles

The alloy used has a high carbon content which provides a longer lasting edge. Blades come individually wrapped. **Non-sterile.**



#10 blades

Box of 100 blades

No. 10010-00



#11 blades

Box of 100 blades

No. 10011-00



#12 blades

Box of 100 blades

No. 10012-00



#15 blades

Box of 100 blades

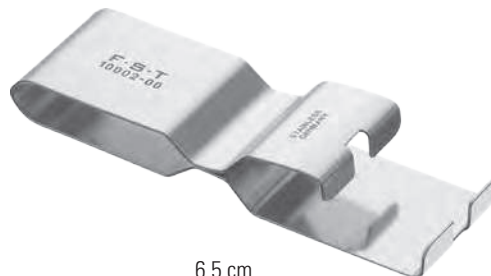
No. 10015-00

Short Scalpel Handle #7

Standard Scalpel Handle #7

Scalpel Blade Remover

For safe removal of scalpel blades, simply insert scalpel with blade into the Scalpel Blade Remover and press the sides together. This will dislodge the blade from handle and hold the blade securely for release.



6.5 cm

No. 10002-00

Scalpel Blade Remover and Disposal Box

This plastic device will remove used scalpel blades safely and retain them for safe disposal. Can be used for blades that fit the #3, #4, #7 and Gross Anatomy handles.

7.5 x 5 x 2.5 cm
Capacity approximately: 80 blades
Carton of 10 boxes



No. 10002-50

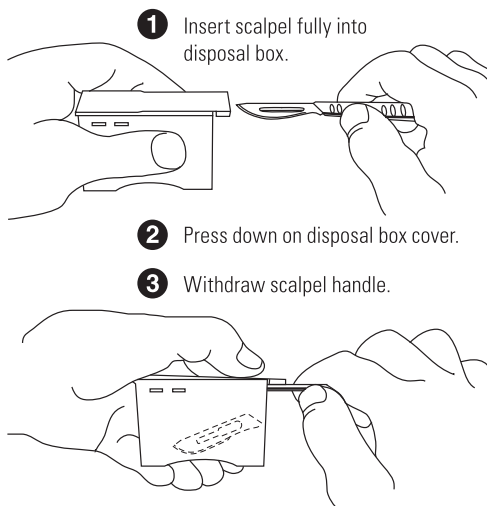
12 cm

No. 10007-12

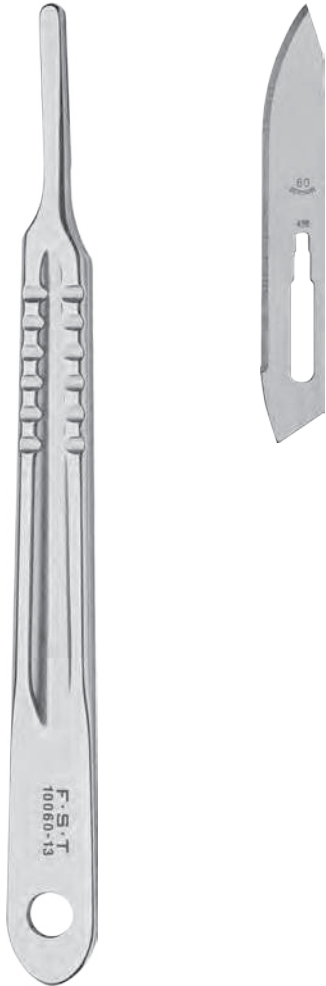
16.5 cm

No. 10007-16

Your fingers will never come in contact with the blade.



Gross Anatomy Blade and Handle



13 cm

No. 10060-13

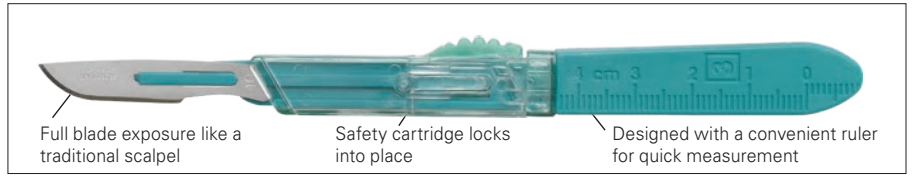
#60 blades

7.5 cm
Box of 100 blades

No. 10060-00

Disposable Safety Scalpels

Plastic handle #3 with stainless steel blades. The protective cartridge completely covers the blade for safe, fast and easy disposal. **Single-use and non-sterile.**



#10 scalpels

14 cm
Pkg. of 10 blades

No. 10000-10



#11 scalpels

14 cm
Pkg. of 10 blades

No. 10000-11



#15 scalpels

14 cm
Pkg. of 10 blades

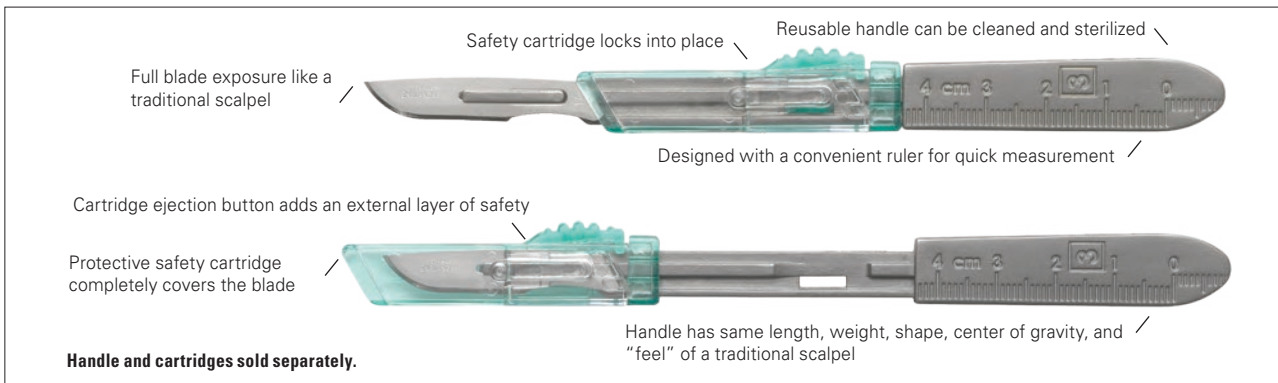
No. 10000-15



Scalpel shown with safety cartridge closed and locked into place.

Safety Scalpel Blade Cartridges

The Safety Scalpel Handle #3 is compatible with all Safety Scalpel Blades. The handle is reusable and made of Teflon coated stainless steel which provides a non-stick surface. The Blade Cartridges are color-coded with clear windows for easy identification. The protective cartridge completely covers the blade for safe, fast, and easy disposal. **Handle is reusable and autoclavable. Blades are single-use and non-sterile.**



Safety Scalpel Handle #3



12.5 cm
Teflon coated Stainless Steel

No. 10006-12

Safety Scalpel Blade Cartridges

Safety Scalpel Blade Cartridges shown open and attached to handle.
Handle and cartridges sold separately.



#10 blades	#11 blades	#15 blades
Pkg. of 10 blades	Pkg. of 10 blades	Pkg. of 10 blades
No. 10010-10	No. 10011-10	No. 10015-10