

Flexible Plastic Feeding Tubes



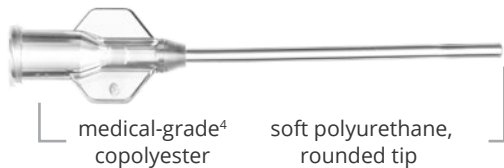
Instech's plastic gavage needles are flexible to reduce the risk of trauma, translucent to visualize delivery, and disposable to eliminate the cost of cleaning and the chance of compound crossover. Flexible tubes are an animal welfare refinement¹ over rigid metal tubes which have been shown to cause significantly more esophageal inflammation².

POLYPROPYLENE FEEDING NEEDLES

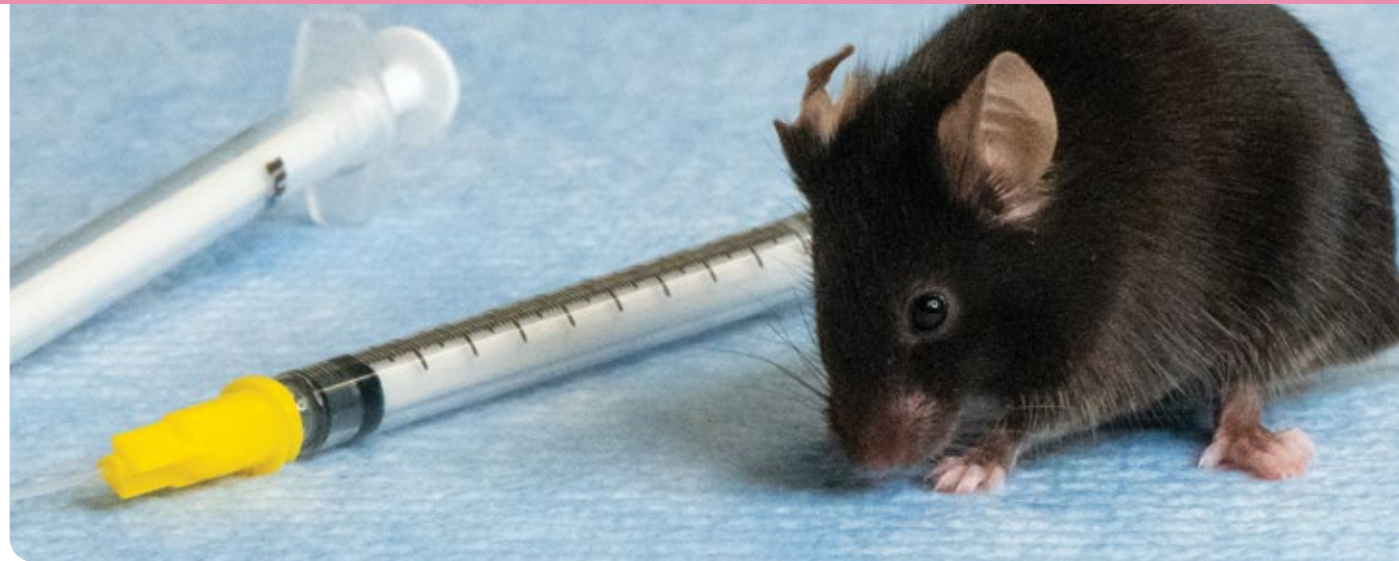


The tube and luer hub are made of the same material used to make plastic syringes. The soft, bulb-shaped tip is designed to reduce the chances of inadvertent placement in the trachea and perforation of the esophagus. Available in 14 sizes for rodents ranging from mouse pups to rats to rabbits.

POLYURETHANE FEEDING NEEDLES



These tubes feature a larger inner diameter for easier delivery of viscous compounds and a straight tip that wipes clean to reduce the chance of compound aspiration. Available in two sizes, 13ga for rats and 16ga for mice, and a special version for dosing size 9 capsules.



Founded in 1971, Instech is a leader in the design and manufacturing of infusion, sampling and dosing equipment for laboratory animal research. Instech's products are manufactured in the USA. They are available in North America, Europe and India through a direct sales force and elsewhere through a network of approved distributors.

Feeding Tubes for Rodents

Instech Laboratories, Inc.
 450 South Gravers Road
 Plymouth Meeting, PA 19462 USA
 1.800.443.4227

240315-ftp-brochure-v1EN

Flexible Plastic Feeding Tubes

PN: 250 pc box (PN: 50 pc box) Tube size (IDxOD) Material Length, Dead Volume

mouse

< 20g
20-30g
> 30g

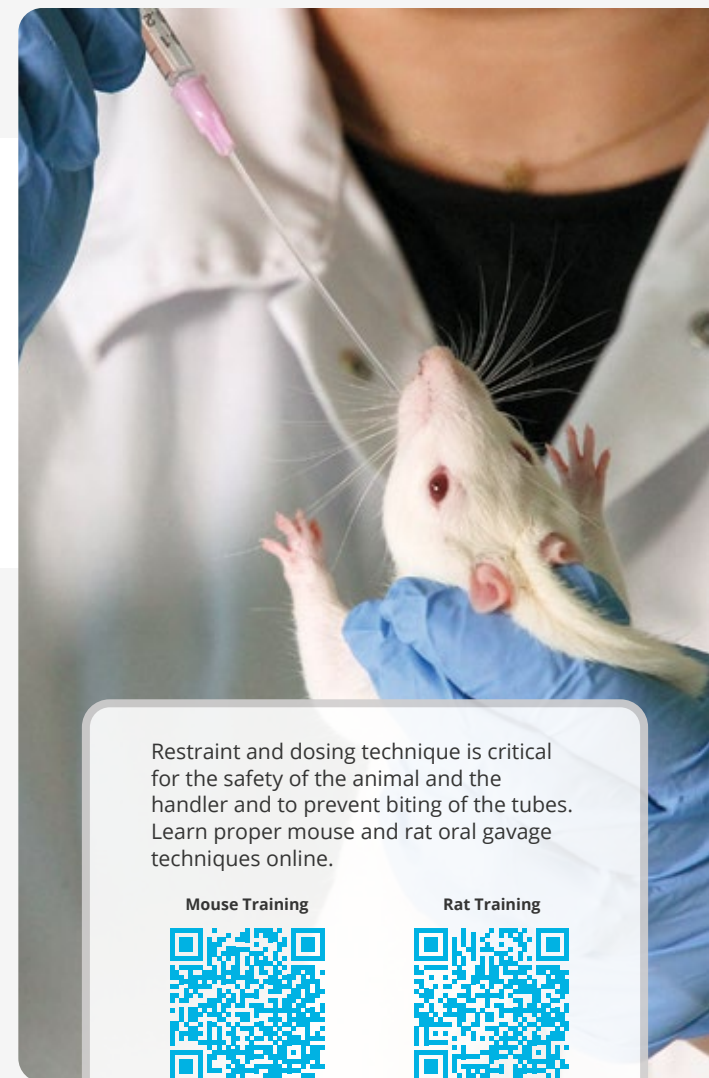
FTP-22-25 (FTP-22-25-50)	22ga (0.4x0.7mm)	PP	25mm (1in), 3µL 1.2mm tip diameter
FTP-20-30 (FTP-20-30-50)	20ga (0.5x0.9mm)	PP	30mm (1.2in), 6µL 1.6mm
FTP-20-34 (FTP-20-34-50)	20ga (0.5x0.9mm)	PP	34mm (1.3in), 6µL 1.6mm
FTP-20-38 (FTP-20-38-50)	20ga (0.5x0.9mm)	PP	38mm (1.5in), 7µL 1.6mm
FTPU-16-38 (FTPU-16-38-50)	16ga (1.0x1.6mm)	PU, PET	38mm (1.5in), 30µL 1.6mm

rat

< 100g
100-200g
200-300g
> 300g

FTP-18-30 (FTP-18-30-50)	18ga (0.7x1.2mm)	PP	30mm (1.2in), 12µL 2.3mm
FTP-22-38 (FTP-22-38-50)	22ga (0.4x0.7mm)	PP	38mm (1.5in), 5µL 1.2mm
FTP-18-38 (FTP-18-38-50)	18ga (0.7x1.2mm)	PP	38mm (1.5in), 15µL 2.3mm
FTP-18-50 (FTP-18-50-50)	18g (0.7x1.2mm)	PP	50mm (2in), 20µL 2.3mm
FTP-15-64 (FTP-15-64-50)	15ga (1.2x1.8mm)	PP	64mm (2.5in), 70µL 3.0mm
FTP-18-75 (FTP-18-75-50)	18ga (0.7x1.2mm)	PP	75mm (3in), 30µL 2.3mm
FTPU-13-88 (FTPU-13-88-50)	13ga (1.5x2.4mm)	PU, PET	88mm (3.5in), 155µL 2.4mm
FTPU-C9-85 ⁵	13ga (1.5x2.4mm)	PU, PET	85mm (3.4in), 150µL 3.3mm for size 9 capsules
FTP-15-78 (FTP-15-78-50)	15ga (1.2x1.8mm)	PP	78mm (3.1in), 90µL 3.0mm
FTP-15-100 (FTP-15-100-50)	15ga (1.2x1.8mm)	PP	100mm (4in), 110µL 3.0mm
FTP-13-90 (FTP-13-90-50)	13ga (1.6x2.4mm)	PP	90mm (3.5in), 180µL 3.5mm
FTP-13-150 (FTP-13-150-50)	13ga (1.6x2.4mm)	PP	150mm (6in), 300µL 3.5mm

large rodents



Restraint and dosing technique is critical for the safety of the animal and the handler and to prevent biting of the tubes. Learn proper mouse and rat oral gavage techniques online.

Mouse Training



Rat Training



1. "Refining procedures for the administration of substances." Report of the BVA/WF/FRAME/RSPCA/UFOW Joint Working Group on Refinement. Laboratory Animals (2001) 35, 1-41.
 2. "Comparison of Plastic and Metal Oral Gavage Needles in C57BL/6 Mice," Herrod, Maye, Kim, Vernon, Healy, Bates, Stanislawcyk, Sowick, Veterinary Sciences, Bristol Myers Squibb; Discovery Toxicology, Bristol Myers Squibb (2023).
 3. Polypropylene is USP Class VI certified and compliant with FDA 21 CFR 177.1520. Colorants added to hub are compliant with FDA 21 CFR 178.3297, except black. Elastomer tip is compliant with FDA 21 CFR 177.1210.
 4. ISO 10993 Compliant.
 5. Capsule dosers sold in boxes of 20 (10 sterile pouches of two).

EO All models sterilized by EtO gas. Plastic tubes packaged five per pouch.

Species suggestions have been compiled based on published papers and anecdotal reports; they are not definitive. Try a variety of sizes to determine what works best for you.

Request free samples at www.instechlabs.com/sample-request

MATERIAL KEY
 PP: polypropylene (tube and hub)
 PU: polyurethane (tube)
 PET: polyethylene terephthalate glycol-modified (hub)

Made in the USA.